

# KÄRCHER

**HBX 4.15 Automatic**  
**HBX 4.20 Automatic**  
**HBX 5.25 Automatic**  
**HBX 5.30 Automatic**  
**HBX 5.35 Automatic**



Read Online



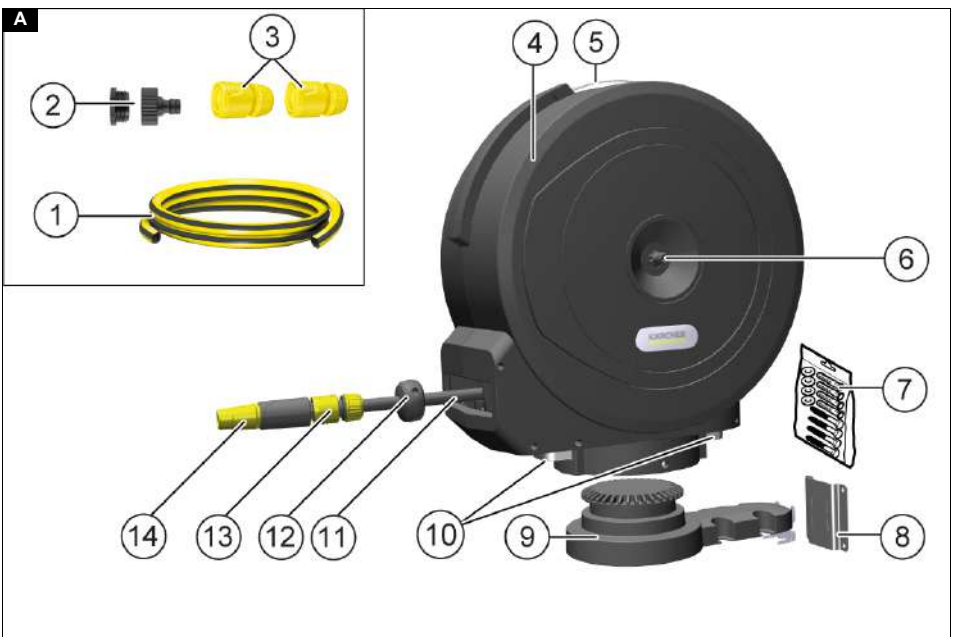
**Register  
your product**  
[www.kaercher.com/welcome](http://www.kaercher.com/welcome)

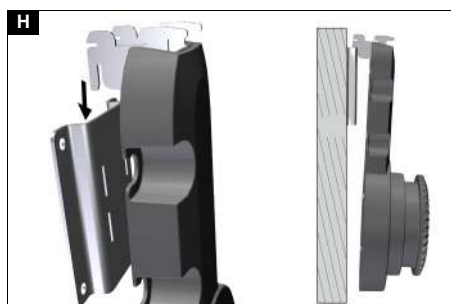
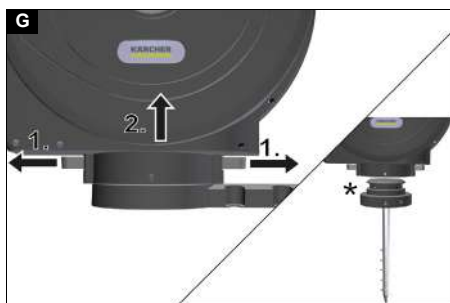
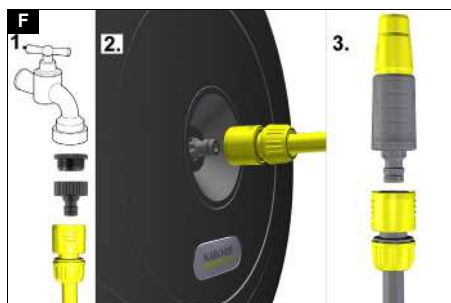
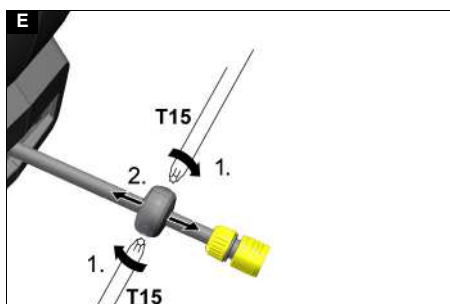
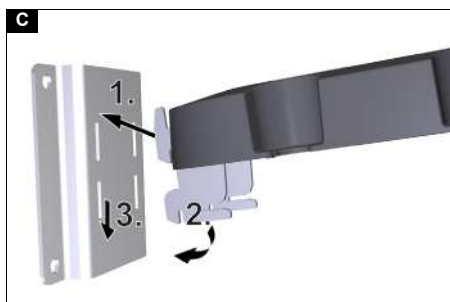
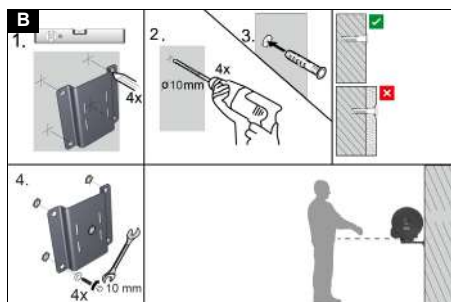


59911200

(08/24)

A







## Contents

General notes .....	7
Safety instructions .....	7
Intended use .....	7
Environmental protection .....	7
Accessories and spare parts .....	7
Scope of delivery .....	7
Device description .....	7
Mounting .....	7
Initial startup .....	8
Operation .....	8
Transport .....	8
Storage .....	8
Maintenance .....	9
Warranty .....	9
EU Declaration of Conformity .....	9
Technical data .....	9

## General notes

  Read the original instructions before using the device for the first time and act in accordance with it. Keep the original instructions for future reference or for future owners.

## Safety instructions

### Hazard levels

#### **DANGER**

- Indication of an imminent threat of danger that will lead to severe injuries or even death.

#### **WARNING**

- Indication of a potentially dangerous situation that may lead to severe injuries or even death.


#### **CAUTION**

- Indication of a potentially dangerous situation that may lead to minor injuries.

#### **ATTENTION**

- Indication of a potentially dangerous situation that may lead to damage to property.

### General safety instructions

 **WARNING** • This device is not designed to be used by persons (including children) with restricted physical, sensory or mental abilities or those lacking in experience or lacking in knowledge except where they are supervised by a person responsible for their safety or have been instructed by them in how to use the device. **CAUTION** • Only have repairs and installation of spare parts performed by the approved Customer Service in order to prevent any hazards.

## Intended use

This product has been developed for private use and is not intended for the loads imposed by commercial use. The manufacturer accepts no liability for possible damage caused by improper use or incorrect operation. This product is an automatic hose box that ensures a uniform rewinding function of the water hose. After use, the water hose can be automatically rolled up by pulling once. The box is mounted on the wall with the supplied wall bracket. It can be used in a variable swivel range of up to 180 degrees. Please observe the requirements of EN 1717 when connecting this product to the drinking water

network and contact your sanitation specialists if you have any questions.

## Environmental protection



The packing materials can be recycled. Please dispose of packaging in accordance with the environmental regulations.



Old devices contain valuable, recyclable materials that should be recycled. Therefore, please dispose of old devices using suitable collection systems.

### Notes on the content materials (REACH)

Current information on content materials can be found at: [www.kaercher.de/REACH](http://www.kaercher.de/REACH)

## Accessories and spare parts

Only use original accessories and original spare parts. They ensure that the appliance will run fault-free and safely.

Information on accessories and spare parts can be found at [www.kaercher.com](http://www.kaercher.com).

## Scope of delivery

The scope of delivery for the appliance is shown on the packaging. Check the contents for completeness when unpacking. If any accessories are missing or in the event of any shipping damage, please notify your dealer.

## Device description

### Illustration A

- ① Supply hose 1.5 m
- ② Water tap connection G3/4 with reducer G1/2
- ③ Hose couplings (pre-mounted on inlet hose)
- ④ Hose box
- ⑤ Carrying handle
- ⑥ Hose connection water inlet
- ⑦ Fastening material for fixing plate
- ⑧ Fixing plate for wall bracket
- ⑨ Wall holder with syringe holder
- ⑩ Unlocking the hose box
- ⑪ Water hose
- ⑫ Hose stopper
- ⑬ Hose coupling with Aqua Stop
- ⑭ Syringe

## Mounting

### Note

The mounting location must be chosen so that no water can flow into the building in the event of a leak.

### Note

We recommend an mounting location protected from direct sunlight, so that neither the device nor the hose heat up too much.

### Mounting the fixing plate

The wall bracket is designed to be mounted on a flat surface.

## Note

The dowels supplied are only suitable for load-bearing masonry. Special dowels must be used for other wall materials.

1. Align the fixing plate for the wall bracket with a spirit level and mark the drill holes.
2. Drill the holes (10 mm).
3. Insert the dowels into the drill holes.
4. Fasten the fixing plate for the wall bracket with the enclosed washers and screws.

## Illustration B

### Inserting the wall bracket

1. Hook in the top two hooks of the wall bracket.
2. Swing in the wall bracket so that the lower two hooks are inserted into the lower slots of the fixing plate.
3. Push the wall bracket down until all 4 hooks are firmly seated in the fixing plate.

## Illustration C

## Initial startup

### Placing the hose box on the wall bracket

## ATTENTION

### Danger of injury and damage

*Danger from the hose box falling down.*

*Check for tight fit of the hose box.*

1. Place the hose box on the wall bracket. The hose box locks itself in place.

### Illustration D

The hose box can be swivelled freely, depending on the clearance on the wall.

### Moving the hose stopper

If the external hose length needs to be extended, the hose stopper can be moved.

1. Release the two screws on the stopper with a Torx screwdriver (T15).
2. Move the stopper to the desired position and screw tight.

## Illustration E

### Connecting the water

1. If necessary, attach the water tap connector to the water tap. Connect the supply hose to the water tap.
2. Connect the supply hose to the side of the water inlet of the hose box.
3. Attach the syringe or other KÄRCHER watering accessories to the water hose.

### Illustration F

4. Open the water tap.

## Operation

### Unrolling the water hose

1. Attach the syringe or other KÄRCHER watering accessories to the hose coupling of the water hose.
2. Pull out the water hose to the desired length. The locking function of the hose box can be activated at approx. 25 - 45 cm intervals and is noticeable by a click.

### Rolling up the water hose

## ⚠ CAUTION

### Risk of injury due to retracting hose

*Make sure that there are no persons near the hose inlet.*

## ATTENTION

### Risk of damage

*Make sure that the water hose has free return flow. It should not be heavily soiled before winding to ensure automatic winding.*

1. Release the lock with a short pull on the water hose to start the automatic winding.
2. The water hose is rolled up evenly. In case of hose blockages, pull out the water hose completely and let it retract again.

### Ending operation

1. Close the water tap.
2. Allow water pressure to escape from the system by briefly turning the sprayer open and closed or by operating another KÄRCHER watering accessory.

## Transport

## ⚠ CAUTION

### Risk of injury or damage due to non-observance of the weight

*Be aware of the weight of the device during transportation.*

1. Remove the hose box from the wall bracket, see chapter *Removing and storing the hose box.*

### Illustration G

2. Use the carrying handle at the top of the hose box for transport.

### Note

*The hose box can then be placed on the ground spike (\*) without tools.*

*\* Optional accessory, not included in the scope of delivery for all variants, part number 2.645-382.0*

## Storage

## ⚠ CAUTION

### Risk of injury or damage due to non-observance of the weight

*Be aware of the weight of the device during storage.*

The hose box can be stored outdoors over the winter when empty.

## ATTENTION

### Risk of damage

*Freezing water can damage the hose box.*

*When storing outdoors over winter, it is essential that the hose box is completely empty.*

1. Remove the supply hose from the water tap and the hose box.
2. Empty the water in the hose box completely.

### Removing and storing the hose box

1. Pull the two release slides of the hose box outwards.
2. Remove the hose box from the wall bracket and store it in a frost-free place.

### Illustration G

3. If required, store KÄRCHER watering accessories directly on the accessory holder of the wall bracket.

## ⚠ CAUTION

### Risk of damage

*Do not attach the hose box if the wall bracket is hung vertically on the wall bracket for storage!*

For space-saving storage, the wall bracket can be removed and hooked onto the fixing plate from above.

### Illustration H

## Securing the hose box

When stored outdoors, the hose box can be secured with a cable lock.

### Note

*A lock is not included in the scope of delivery. In order for a cable lock to fit through the securing eyelet, it must be ensured that the parts of the securing system to be passed through are no larger than 8 mm.*

1. Hang the wall bracket, see chapter *Inserting the wall bracket*.
2. Place the hose box on the wall bracket, see chapter *Placing the hose box on the wall bracket*.
3. Pass the cable lock through the eyelet on the back of the hose box.
4. Guide the cable lock between the fixing plate and the wall and close it.

### Illustration I

## Maintenance

### ⚠ CAUTION

#### **Danger of injury and damage**

*The hose box must not be opened. Repair work on the product may only be carried out by authorised Customer Service.*

The product is maintenance-free.

Wipe the hose box and hose occasionally with a damp cloth when stored outdoors.

## Warranty

The warranty conditions issued by our sales company responsible apply in all countries. We shall remedy possible malfunctions on your device within the warranty period free of cost, provided that a material or manufacturing defect is the cause. In a warranty case, please contact your dealer (with the purchase receipt) or the next authorised customer service site.  
(See overleaf for the address)

## EU Declaration of Conformity

We hereby declare that the machine described below complies with the relevant basic safety and health requirements in the EU Directives, both in its basic design and construction as well as in the version placed in circulation by us. This declaration is invalidated by any changes made to the machine that are not approved by us.

Product: Hose box

Type: 2.645-xxx

### Currently applicable EU Directives

2006/42/EC (+2009/127/EC)

### Harmonised standards used

EN ISO 12100

### National standards used

-

The signatories act on behalf of and with the authority of the company management.



H. Jenner

Chairman of the Board of Management



S. Reiser

Director Regulatory Affairs & Certification

Documentation supervisor:

S. Reiser

Alfred Kärcher SE & Co. KG

Alfred-Kärcher-Str. 28 - 40

71364 Winnenden (Germany)

Ph.: +49 7195 14-0

Fax: +49 7195 14-2212

Winnenden, 2023/04/01

## Technical data

		HBX 4.15 Automatic	HBX 4.20 Automatic	HBX 5.25 Automatic	HBX 5.30 Automatic	HBX 5.35 Automatic
Hose length (+supply hose)	m	15 (+1,5)	20 (+1,5)	25 (+1,5)	30 (+1,5)	35 (+1,5)
Hose diameter	mm	11	11	11	11	11
Working pressure (max.)	bar	12	12	12	12	12
Weight (without accessories)	kg	7,57	8,68	10,84	11,80	13,03

Subject to technical modifications.



**THANK YOU!**  
**MERCI! DANKE! ¡GRACIAS!**



Registrieren Sie Ihr Produkt und profitieren Sie von vielen Vorteilen.

Register your product and benefit from many advantages.

Enregistrez votre produit et bénéficiez de nombreux avantages.

Registre su producto y aproveche de muchas ventajas.

**[www.kaercher.com/welcome](http://www.kaercher.com/welcome)**



Bewerten Sie Ihr Produkt und sagen Sie uns Ihre Meinung.

Rate your product and tell us your opinion.

Évaluer votre produit et dites-nous votre opinion.

Reseñe su producto y díganos su opinión.



**[www.kaercher.com/dealersearch](http://www.kaercher.com/dealersearch)**

**Alfred Kärcher SE & Co. KG**

Alfred-Kärcher-Str. 28-40

71364 Winnenden (Germany)

